



Technical Information

DATE: Tuesday December 22, 2009

DOCUMENT NO.: TN-KX-TSMDRLAN-112209

Title: Printing Out SMDR Using LAN Port.

Systems Affected: KX-TDE 100/200/600, and KXT-NCP 500/1000

Associated Tech Notes: None

Applications:

- Printing SMDR Data via LAN port.

What is covered?

After reviewing this technical note, you will know the following:

- How to setup Hyper terminal to view SMDR data via LAN port.



1. Go to **11.1 Maintenance – Main**.
2. Set Port to **LAN**.
3. Under Print Information select which items you would like to display in the SMDR Printout.

KX-TDE Maintenance Console - [11. Maintenance - 1. Main]

File(F) Disconnect(D) Tool(T) Utility(U) View(V) Window(W) Help(H)

System Menu x 11.1 Main

1. Configuration
2. System
3. Group
4. Extension
5. Optional Device
6. Feature
7. TRS
8. ARS
9. Private Network
10. CO & Incoming Call
11. Maintenance

1. Main
2. PT Programming Access
3. Power Failure Transfer
4. SNMP

OK(O) Cancel(C) Apply(A)

SMDR SMDR Options RS232C Maintenance Syslog Remote Password

SMDR Format

Type: Type A
Port: LAN
Page Length (Number of Lines): 66
Blank Footer Length (Number of Lines): 0
Date Format: MM-DD-YY
Time Format (12H / 24H): 12H

Print Information

Outgoing Call: Print
Incoming Call: No Print
Intercom Call: No Print
Log-in / Log-out: No Print
Hotel Room Status: No Print
Error Log: No Print

Batch Mode: Type : TDE100 Level : Installer Version002-000 Region002-002



4. Click on **SMDR Options** tab.
5. Note the default **SMDR Port Number** and **Password**. (These can be changed at you own discretion, but for this document we will use the default settings.)

KX-TDE Maintenance Console - [11. Maintenance - 1. Main]

File(F) Disconnect(D) Tool(T) Utility(U) View(V) Window(W) Help(H)

System Menu x 11.1 Main

1.Configuration
2.System
3.Group
4.Extension
5.Optional Device
6.Feature
7.TRS
8.ARS
9.Private Network
10.CO & Incoming Call
11.Maintenance

1. Main
2. PT Programming Access
3. Power Failure Transfer
4. SNMP

OK(O) Cancel(C) Apply(A)

SMDR SMDR Options RS232C Maintenance Syslog Remote Password

Option

ARS Dial: Dial after ARS Modification

Caller ID Number & Name: Number

DID Number & Name: None

Secret Dial: Print "..." (Secret)

Condition Code "RC/VR": No Print

Condition Code "AN/VA": No Print

Caller ID Modification: Before Modification

LAN

SMDR Port Number: 2300

SMDR Password: PCCSMDR

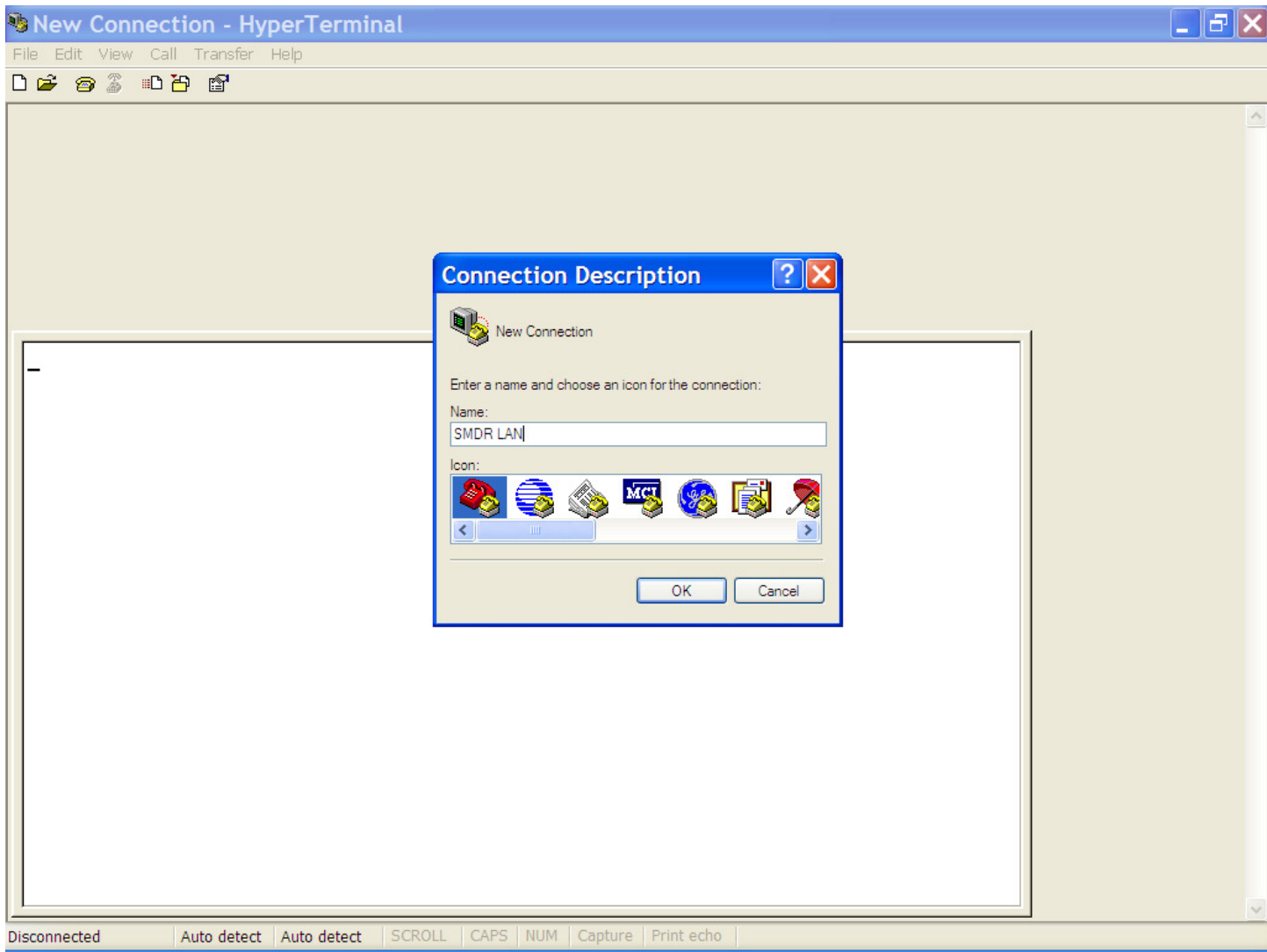
New-Line Code for Telnet: CR + LF

*) Perform System Reset for changes to take effect

Batch Mode: Type : TDE100 Level : Installer Version002-000 Region002-002

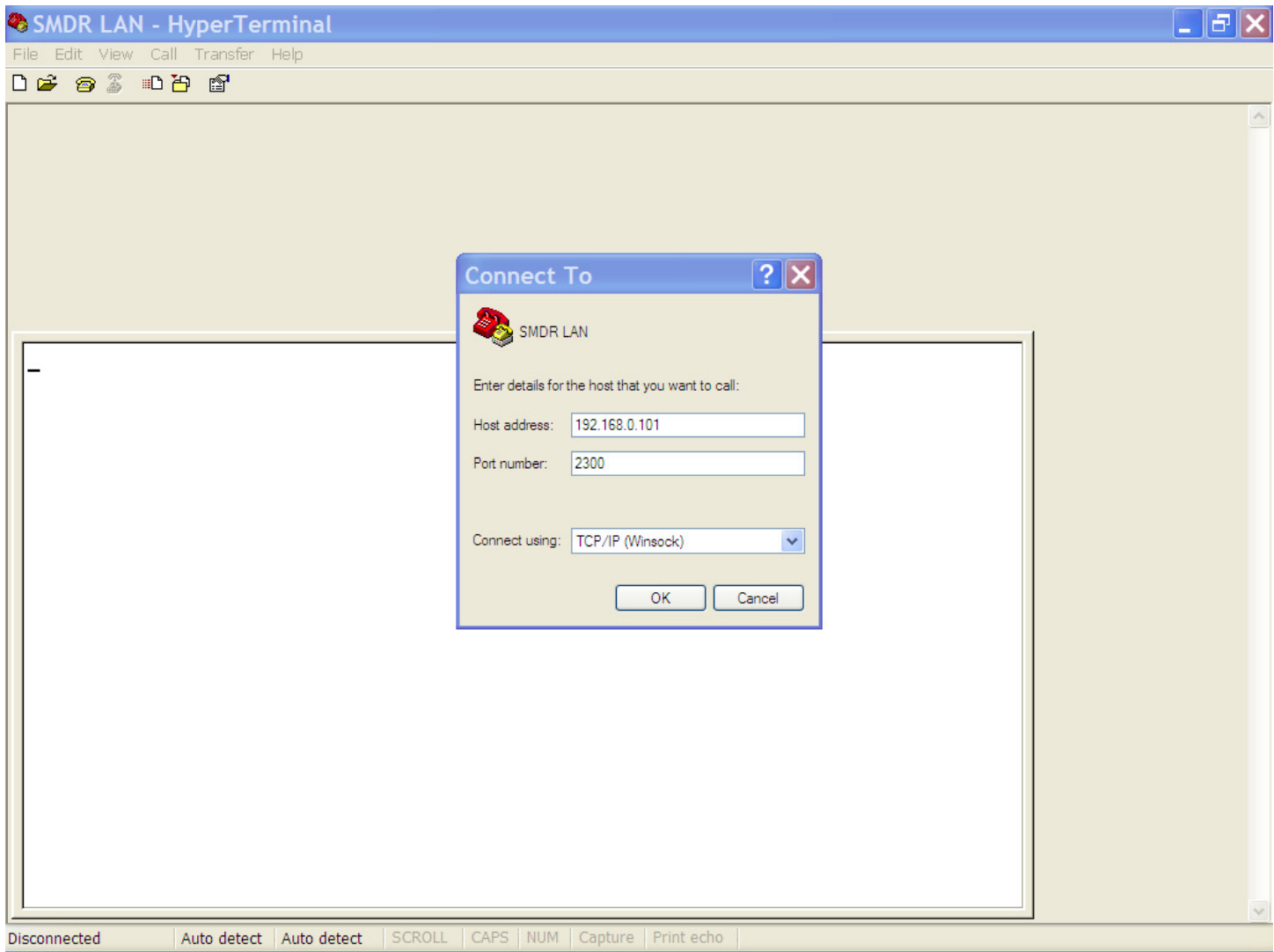


6. Open up **Hyper Terminal**.
7. Enter in a **Name** for the Connection and click OK.



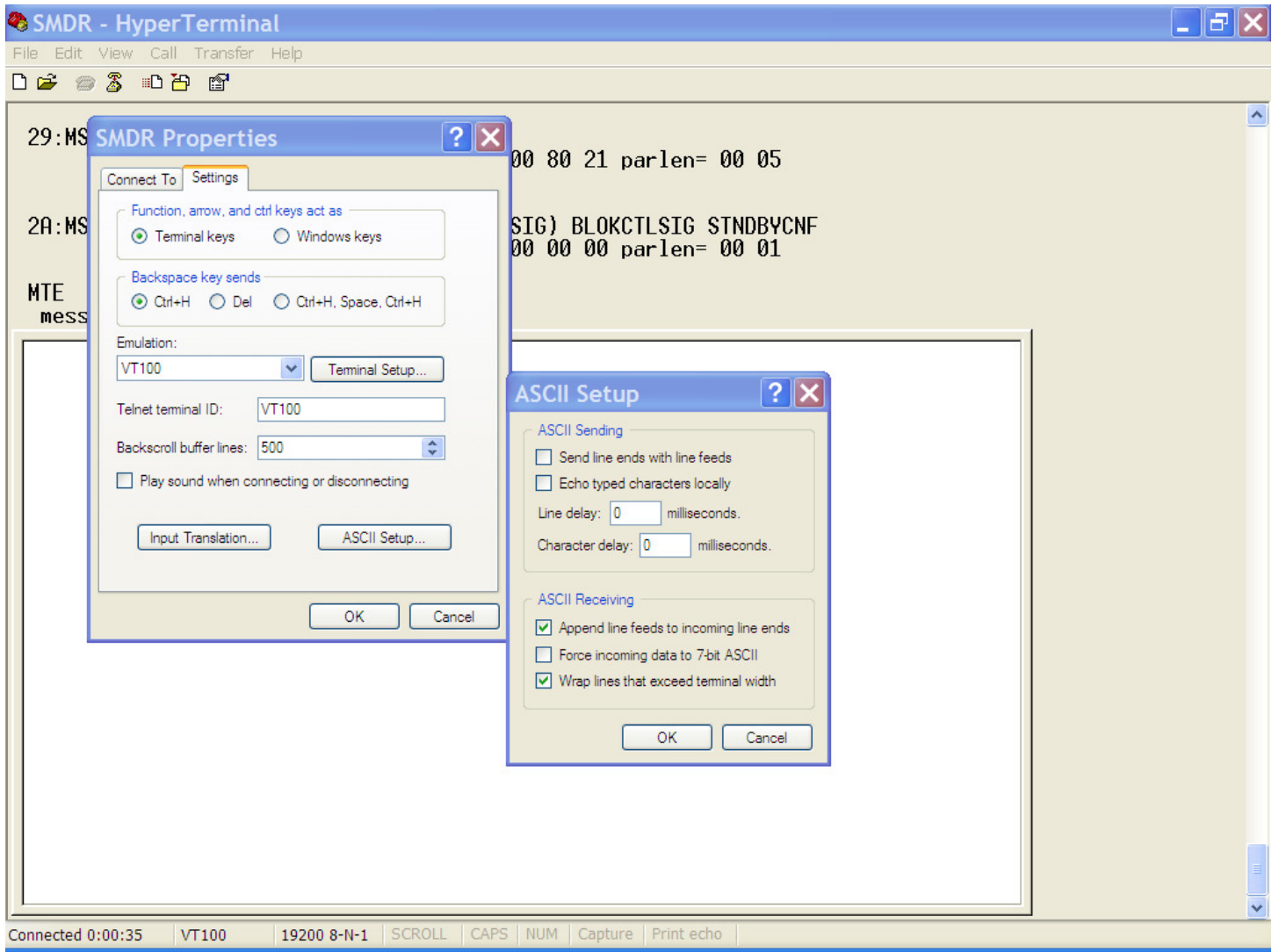


8. Set **Connect Using** to TCP/IP (Winsock).
9. Enter **Host address**. (IPCMPR Card IP Address)
10. Set **Port number** as 2300.
11. Click OK.





12. Click on **File**, then **Properties**.
13. Click on **Settings** Tab.
14. Click on **ASCII Setup** button.
15. Check **Mark Append line feeds to incoming line ends**.
16. Click OK, then click OK again.





17. Type in **SMDR** at the cursor.
18. Enter **Password** (PCCSMDR by default).

